

# 6" OR 8" C.M.U. GARDEN WALL | G



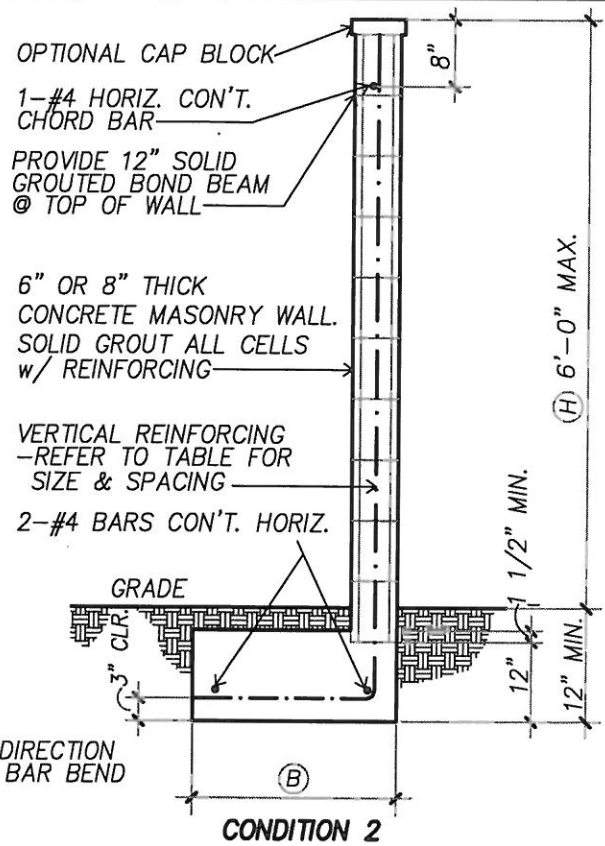
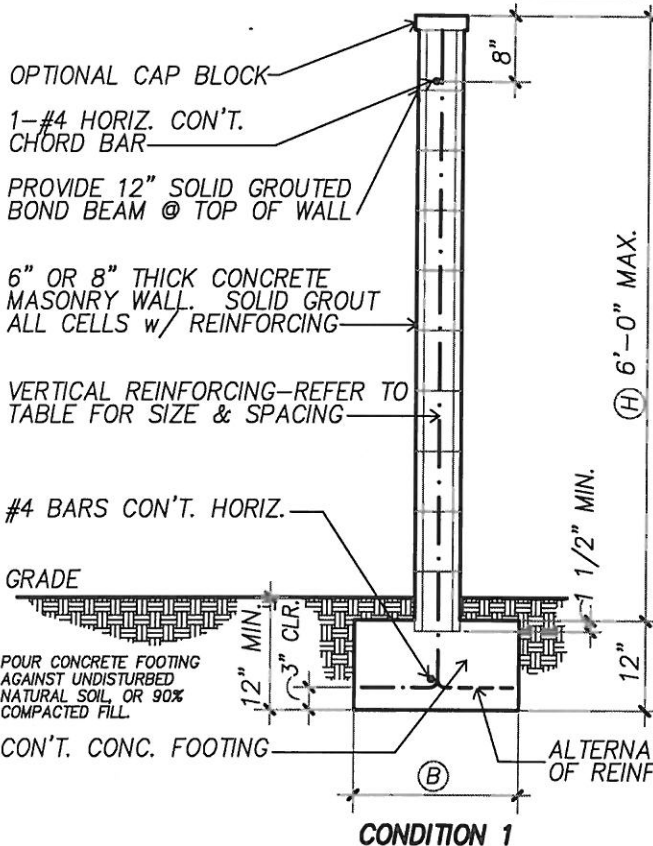
## CITY OF FULLERTON

COMMUNITY DEVELOPMENT DEPARTMENT

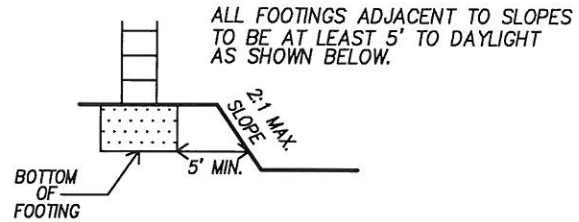
303 W. COMMONWEALTH AVENUE

FULLERTON CA 92832

(714) 738-6541



CONDITION 1		CONDITION 2		VERTICAL REINFORCEMENT	
(H)	(B)	(B)	6" BLOCK	8" BLOCK	
3'	1'-0"	1'-7"	#3 @ 48" o/c	#3 @ 48" o/c	
4'	1'-0"	1'-10"	#3 @ 48" o/c	#3 @ 40" o/c	
5'	1'-3"	2'-5"	#4 @ 48" o/c	#4 @ 48" o/c	
6'	1'-6"	2'-10"	#4 @ 32" o/c	#4 @ 24" o/c	



**NOTES:**

1. ALL CELLS CONTAINING REINFORCING SHALL BE FULLY GROUTED.
2. CONCRETE AND GROUT SHALL BE MACHINE MIXED, 2,500 P.S.I. @ 28 DAY ULTIMATE COMPRESSIVE STRENGTH.
3. CONCRETE MASONRY BLOCK SHALL BE GRADE 'A' UNITS, PER A.S.T.M. C90-52.
4. FINISH GRADE SHALL BE LEVEL ABOVE & BELOW THE WALL FOR A DISTANCE EQUAL TO THE WALL HEIGHT.
5. GROUT SHALL BE 1 PART CEMENT TO 3 PARTS SAND. ( MIN. 1500 P.S.I. )
6. REINFORCING BARS SHALL BE KEPT 3" MIN. CLEAR OF EARTH. SPLICES SHALL BE LAPPED 18" MIN.
7. INSPECTIONS SHALL BE CALLED FOR WHEN FOOTING EXCAVATION IS CLEAN, WITH STEEL IN PLACE AND WHEN BLOCKS ARE LAID, JUST PRIOR TO GROUTING.