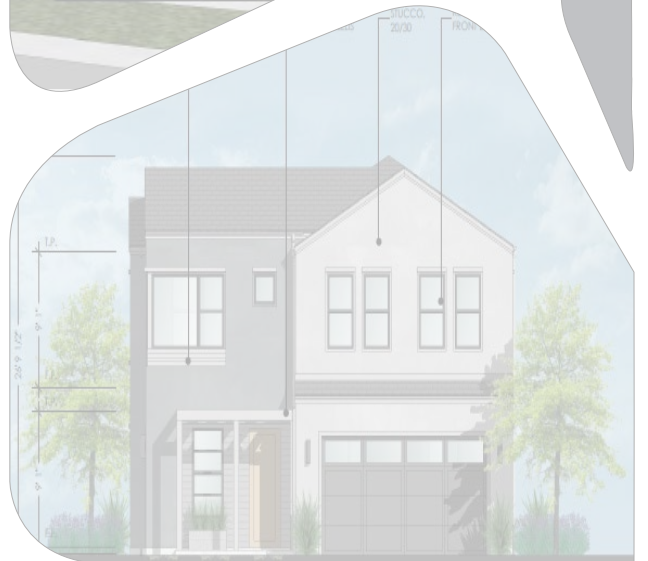


Noise Data



Measurement Report

Report Summary

Meter's File Name	FUL_001	Computer's File Name	SLM_0005586_FUL__001.00.ldbin
Meter	LxT SE		
Firmware	2.404		
User	Alex Howard	Location	
Description	Pines at Fullerton		
Note			
Start Time	2021-06-23 14:56:11	Duration	0:10:00.0
End Time	2021-06-23 15:06:11	Run Time	0:10:00.0
		Pause Time	0:00:00.0

Results

Overall Metrics

LA _{eq}	61.1 dB		
LAE	88.8 dB	SEA	--- dB
EA	85.0 µPa²h		
LA _{peak}	95.7 dB	2021-06-23 15:05:14	
LAS _{max}	82.0 dB	2021-06-23 15:05:15	
LAS _{min}	44.6 dB	2021-06-23 15:02:09	
LA _{eq}	61.1 dB		
LC _{eq}	67.4 dB	LC _{eq} - LA _{eq}	6.3 dB
LAI _{eq}	64.0 dB	LAI _{eq} - LA _{eq}	2.9 dB

Exceedances

	Count	Duration
LAS > 85.0 dB	0	0:00:00.0
LAS > 115.0 dB	0	0:00:00.0
LA _{peak} > 135.0 dB	0	0:00:00.0
LA _{peak} > 137.0 dB	0	0:00:00.0
LA _{peak} > 140.0 dB	0	0:00:00.0

Community Noise

LDN	LDay	LNight	
61.1 dB	61.1 dB	0.0 dB	
LDEN	LDay	LEve	LNight
61.1 dB	61.1 dB	--- dB	--- dB

Any Data

	A		C		Z	
	Level	Time Stamp	Level	Time Stamp	Level	Time Stamp
L _{eq}	61.1 dB		67.4 dB		--- dB	
LS _(max)	82.0 dB	2021-06-23 15:05:15	--- dB		--- dB	
LS _(min)	44.6 dB	2021-06-23 15:02:09	--- dB		--- dB	
L _{Peak(max)}	95.7 dB	2021-06-23 15:05:14	--- dB		--- dB	

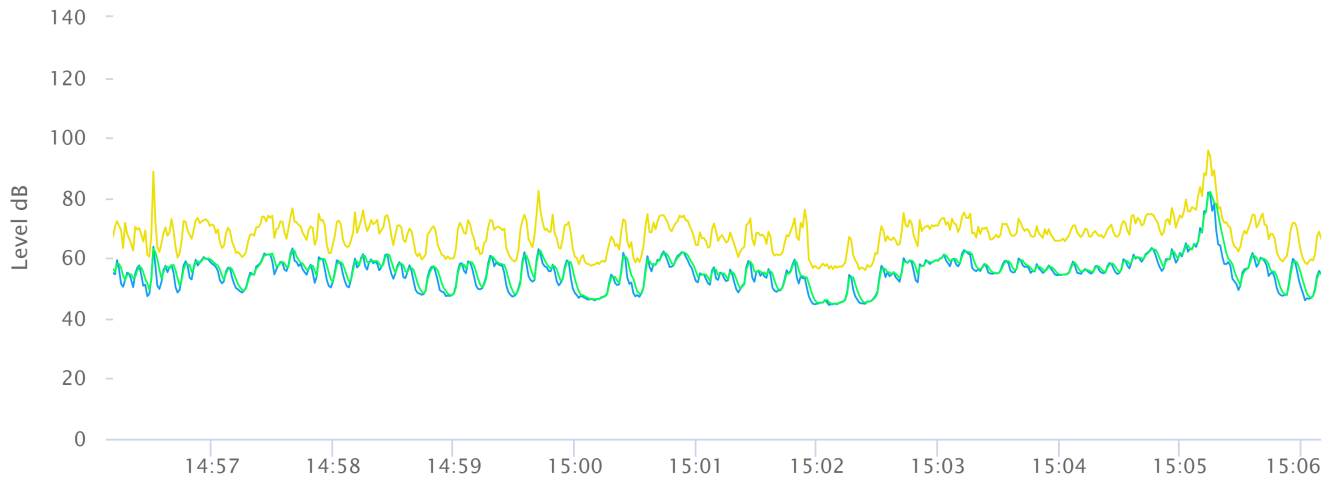
Overloads

Count	Duration	OBA Count	OBA Duration
0	0:00:00.0	0	0:00:00.0

Statistics

LAS 5.0	61.7 dB
LAS 10.0	60.3 dB
LAS 33.3	57.6 dB
LAS 50.0	55.9 dB
LAS 66.6	54.3 dB
LAS 90.0	48.2 dB

Time History



— LAeq: 0.0 dB — LApeak: 0.0 dB — LASmax: 0.0 dB — LASmin: 0.0 dB



Measurement Report

Report Summary

Meter's File Name	FUL_002	Computer's File Name	SLM_0005586_FUL_002.00.ldbin
Meter	LxT SE		
Firmware	2.404		
User	Alex Howard	Location	
Description	Pines at Fullerton		
Note			
Start Time	2021-06-23 15:30:13	Duration	0:10:00.0
End Time	2021-06-23 15:40:13	Run Time	0:10:00.0
		Pause Time	0:00:00.0

Results

Overall Metrics

LA _{eq}	56.9 dB		
LAE	84.7 dB	SEA	--- dB
EA	32.6 µPa²h		
LA _{peak}	97.9 dB	2021-06-23 15:35:05	
LAS _{max}	75.7 dB	2021-06-23 15:31:55	
LAS _{min}	45.7 dB	2021-06-23 15:30:52	
LA _{eq}	56.9 dB		
LC _{eq}	70.5 dB	LC _{eq} - LA _{eq}	13.6 dB
LAI _{eq}	63.2 dB	LAI _{eq} - LA _{eq}	6.3 dB

Exceedances

	Count	Duration
LAS > 85.0 dB	0	0:00:00.0
LAS > 115.0 dB	0	0:00:00.0
LAPeak > 135.0 dB	0	0:00:00.0
LAPeak > 137.0 dB	0	0:00:00.0
LAPeak > 140.0 dB	0	0:00:00.0

Community Noise

LDN	LDay	LNight	
56.9 dB	56.9 dB	0.0 dB	
LDEN	LDay	LEve	LNight
56.9 dB	56.9 dB	--- dB	--- dB

Any Data

	A		C		Z	
	Level	Time Stamp	Level	Time Stamp	Level	Time Stamp
L _{eq}	56.9 dB		70.5 dB		--- dB	
LS _(max)	75.7 dB	2021-06-23 15:31:55	--- dB		--- dB	
LS _(min)	45.7 dB	2021-06-23 15:30:52	--- dB		--- dB	
L _{Peak(max)}	97.9 dB	2021-06-23 15:35:05	--- dB		--- dB	

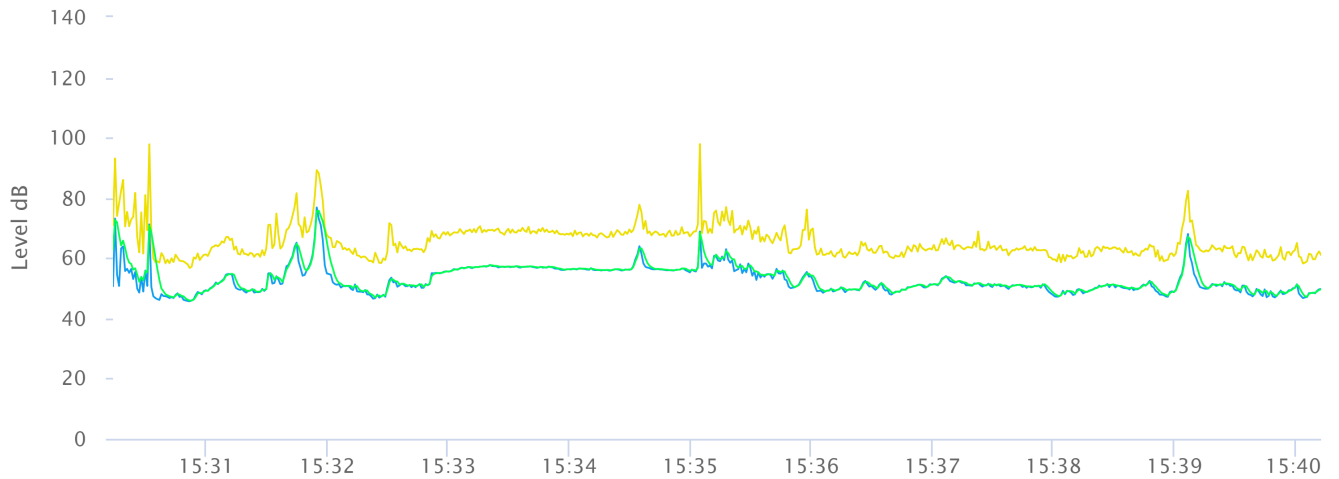
Overloads

Count	Duration	OBA Count	OBA Duration
0	0:00:00.0	0	0:00:00.0

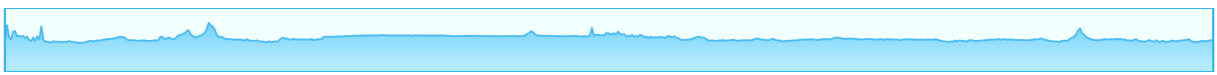
Statistics

LAS 5.0	60.5 dB
LAS 10.0	57.4 dB
LAS 33.3	55.2 dB
LAS 50.0	51.2 dB
LAS 66.6	50.4 dB
LAS 90.0	48.3 dB

Time History



— LAeq: 0.0 dB — LApeak: 0.0 dB — LASmax: 0.0 dB — LASmin: 0.0 dB



Measurement Report

Report Summary

Meter's File Name	FUL_003	Computer's File Name	SLM_0005586_FUL_003.00.ldbin
Meter	LxT SE		
Firmware	2.404		
User	Alex Howard	Location	
Description	Pines at Fullerton		
Note			
Start Time	2021-06-23 15:56:53	Duration	0:10:00.0
End Time	2021-06-23 16:06:53	Run Time	0:10:00.0
		Pause Time	0:00:00.0

Results

Overall Metrics

LA _{eq}	50.8 dB		
LAE	78.6 dB	SEA	--- dB
EA	8.0 μPa²h		
LA _{peak}	97.6 dB	2021-06-23 15:57:21	
LAS _{max}	71.1 dB	2021-06-23 15:57:21	
LAS _{min}	43.8 dB	2021-06-23 15:57:55	
LA _{eq}	50.8 dB		
LC _{eq}	63.3 dB	LC _{eq} - LA _{eq}	12.5 dB
LAI _{eq}	60.3 dB	LAI _{eq} - LA _{eq}	9.5 dB

Exceedances

	Count	Duration
LAS > 85.0 dB	0	0:00:00.0
LAS > 115.0 dB	0	0:00:00.0
LA _{peak} > 135.0 dB	0	0:00:00.0
LA _{peak} > 137.0 dB	0	0:00:00.0
LA _{peak} > 140.0 dB	0	0:00:00.0

Community Noise

LDN	LDay	LNight	
50.8 dB	50.8 dB	0.0 dB	
LDEN	LDay	LEve	LNight
50.8 dB	50.8 dB	--- dB	--- dB

Any Data

	A		C		Z	
	Level	Time Stamp	Level	Time Stamp	Level	Time Stamp
L _{eq}	50.8 dB		63.3 dB		--- dB	
LS _(max)	71.1 dB	2021-06-23 15:57:21	--- dB		--- dB	
LS _(min)	43.8 dB	2021-06-23 15:57:55	--- dB		--- dB	
L _{Peak(max)}	97.6 dB	2021-06-23 15:57:21	--- dB		--- dB	

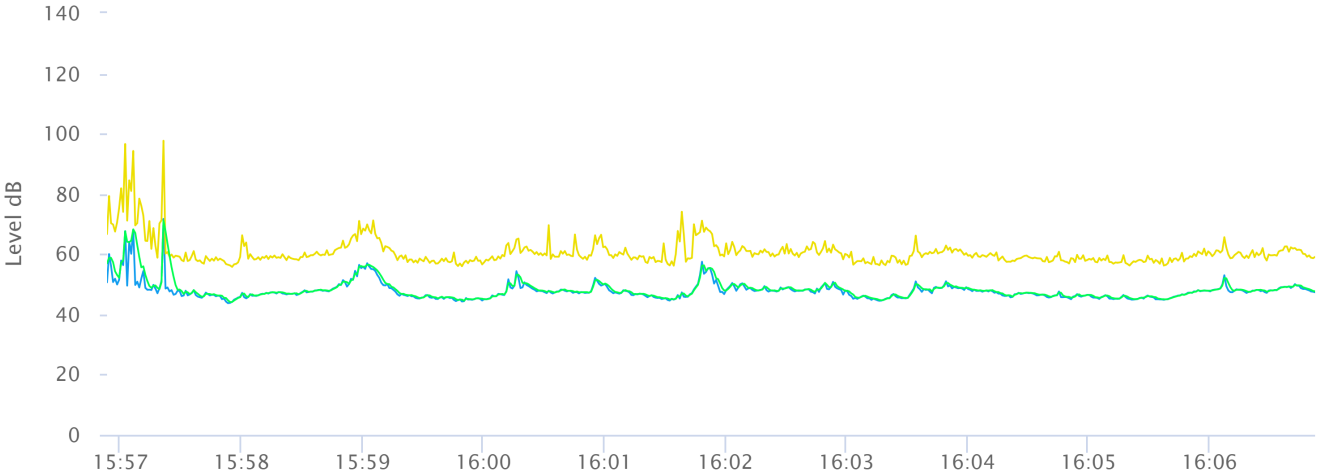
Overloads

Count	Duration	OBA Count	OBA Duration
0	0:00:00.0	0	0:00:00.0

Statistics

LAS 5.0	54.4 dB
LAS 10.0	50.6 dB
LAS 33.3	48.0 dB
LAS 50.0	47.4 dB
LAS 66.6	46.5 dB
LAS 90.0	45.3 dB

Time History



— LAeq: 0.0 dB — LApeak: 0.0 dB — LASmax: 0.0 dB — LASmin: 0.0 dB

