



**CITY OF FULLERTON
INFRASTRUCTURE AND NATURAL
RESOURCES ADVISORY COMMITTEE**

INFRASTRUCTURE DATA SHEET

Date: February 2020

Asset: SEWER SYSTEM

Asset Description: The City owns and operates the sewer waste collection system serving all properties within the City limits. The system consists of underground pipes, manholes, and siphons. The system does not include pump stations. The oldest pipes were built in the early 1920's and therefore reaching 100 years old. The system connects to OCSD trunk sewer main pipes that run within the City. The City is responsible for the sewer main pipes, not the sewer lateral pipes that serve the individual properties. The property owner is responsible for the lateral pipe from the building all the way to the connection with main pipe, even if the main pipe is located in the street right of way.

In 2002 the California Regional Water Quality Control Board enacted Rule R8-2002-014 requiring compliance with the requirements of a new Waste Discharge Requirement. In response to this Rule, the City adopted Ordinance No. 3052 which created the Sewer Enterprise Fund. The revenues from this fund are used solely for the improvement, repair, operation and maintenance of the sewer system. Rates for this fund were passed by the City as Resolution's 9734 and 9758.

In 2006, maintenance and operation of the sewer system became regulated by the California Regional Water Quality Control Board's General Waste Discharge Requirements for Sanitary Sewer Systems, Order No. 2006-003-DWQ. This Order replaced Rule R8-2002-014. In general, this order is very similar to Rule R8-2002-014 and requires the City to properly fund and manage the sewer system and provide maintenance of the system to reduce sewer overflow situations in order to minimize water quality impacts and potential nuisance conditions. The revenue from the Sewer Enterprise Fund is now used to address the requirements of Order No. 2006-003-DWQ.

In 2009, the City completed a Sewer Master Plan study. The focus of the study was to identify system deficiencies in regards to capacity and condition, and develop a 20-year capital improvement program (CIP) to address the deficiencies. The study identified 17 capacity related improvement projects. To date, the City has addressed approximately 75% of these projects.

In 2014, the City updated the Sewer System Management Plan (SSMP). This plan is required by Order No. 2006-003-DWQ and details the operations and maintenance requirements for the sewer system.

Asset Quantity:

- Approximately 330 miles of piping
 - Including 2.7 miles of privately owned sewer pipes
 - 99% of piping is Vitrified Clay Pipe (VCP)
- Sewer main pipe sizes range from 6" to 39" in diameter
 - Approximately 80% of pipes are 6" to 8" in diameter
- 33 siphons ranging in size from 6" to 39" pipes
- Approximately 6,850 access manholes and 250 lampholes/cleanouts

Asset Needs: Various levels of preventive maintenance and improvements including:

- Removal of siphons when conditions allow
- Construction of remaining priority improvement projects
- Construction of improvement projects based on identified maintenance issues
 - Cracked/damaged pipes, sags in pipe, etc.
- Replacement of brick manholes with precast manholes
- Replacement of lampholes/cleanouts with precast manholes
- Replacement of approximately 1 mile of sewer main that is older than 100 years

Approximate Total Current Need: \$55,000,000

Allowable Funding Sources: General Fund, Sewer Enterprise Fund

<u>Current Annual Funding:</u>	\$2,300,000	for Operations and Maintenance
	<u>\$3,900,000</u>	for CIP
	\$6,200,000	Sewer Enterprise Fund

Typical Annual Improvements/Maintenance:

- Video inspection of approximately 50 miles of pipe
- Cleaning and maintenance of 33 siphons (monthly)
- Cleaning and maintenance of approximately 220 miles of sewer pipe
- CIP projects involving replacement and/or upsizing of pipes in accordance with Master Plan or current maintenance issues
 - Projects are typically coordinated with street and water improvement projects.

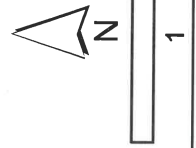
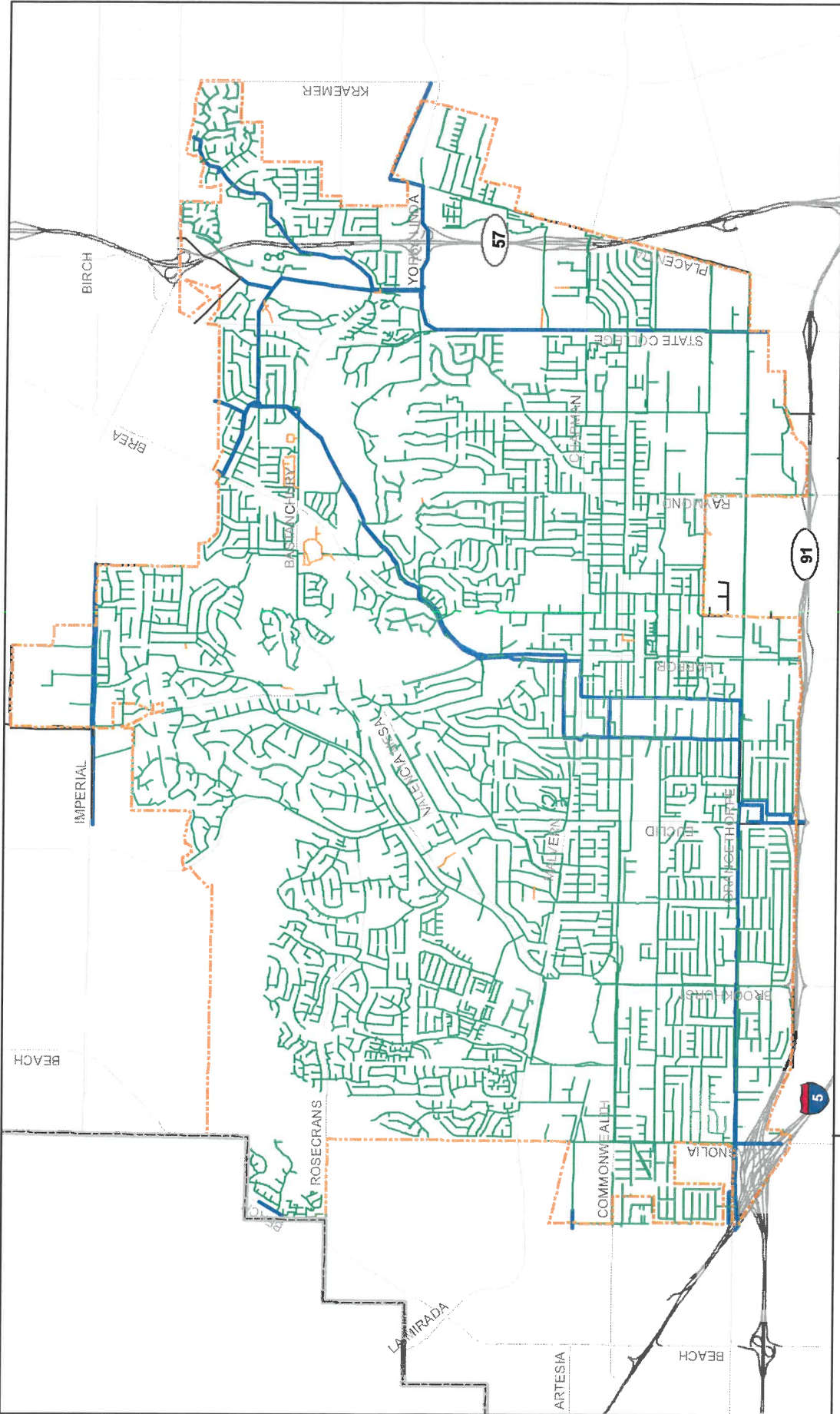
Recommended Annual Strategy & Associated Costs:

Sewer Enterprise Fund is currently generating sufficient revenue to address on-going operations and maintenance plus programmed capital improvement projects. As such, staff does not recommend any revisions to the current program.

The Sewer Division and CIP Division coordinate annually to determine priority projects and program the projects within the City's 5-year CIP budget.

Sewer Division will also continue inspection, cleaning and maintenance of the sewer mains and siphons, plus implement the requirements of the SSMP.

Recommended Additional Annual Funding: **None at this time.**



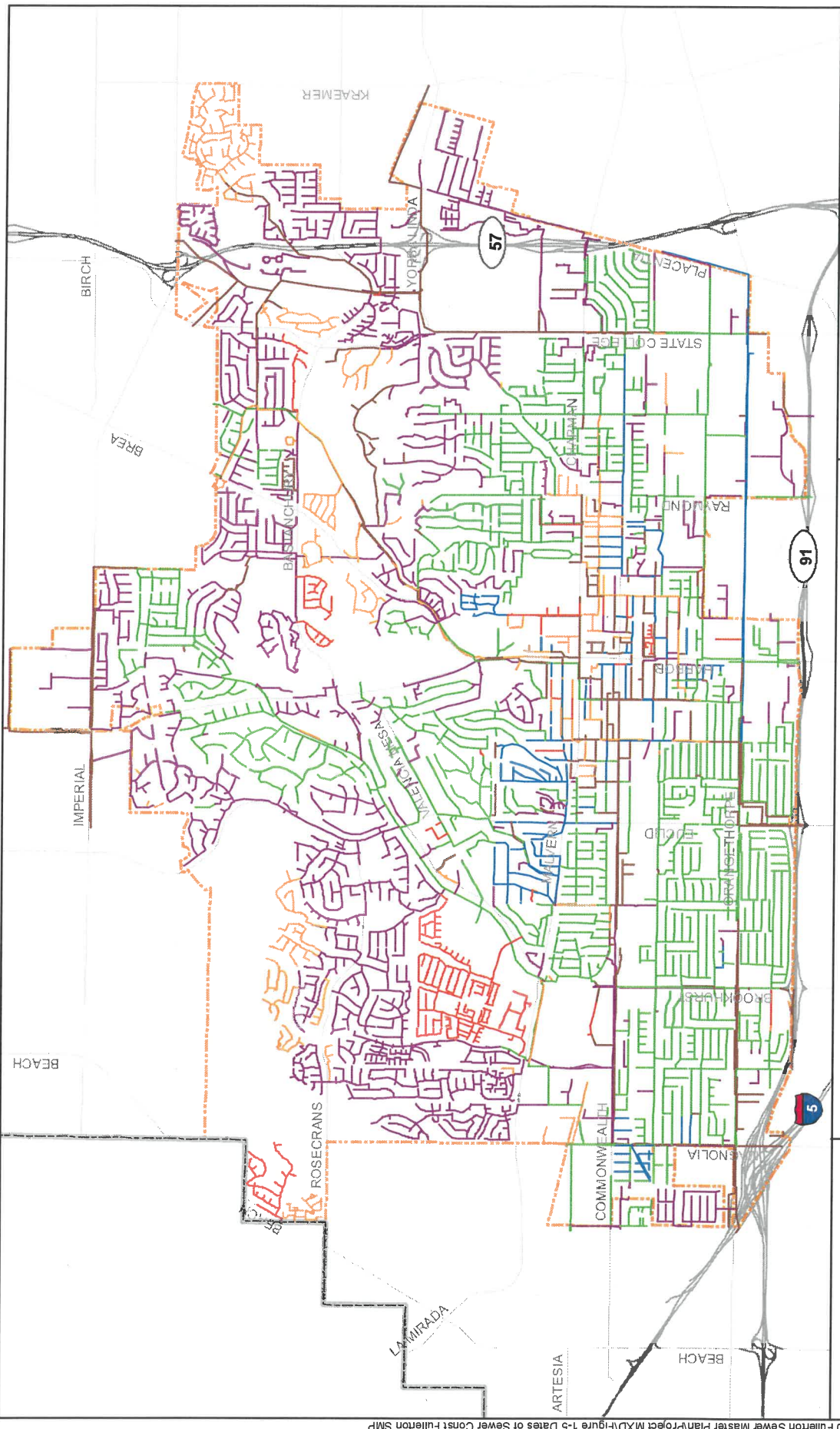
- Fullerton Sewer
- OCSD Trunk Sewer
- Private Sewer
- Other
- County Boundary
- City Boundary
- Freeway
- Major Roads



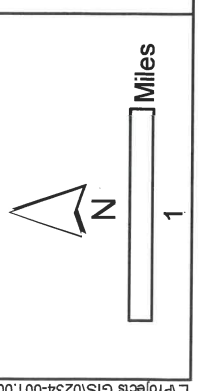
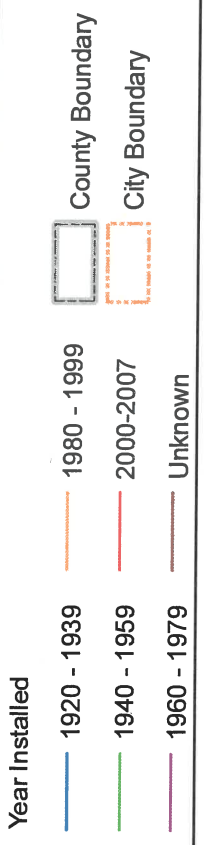
City of Fullerton
Sewer Master Plan

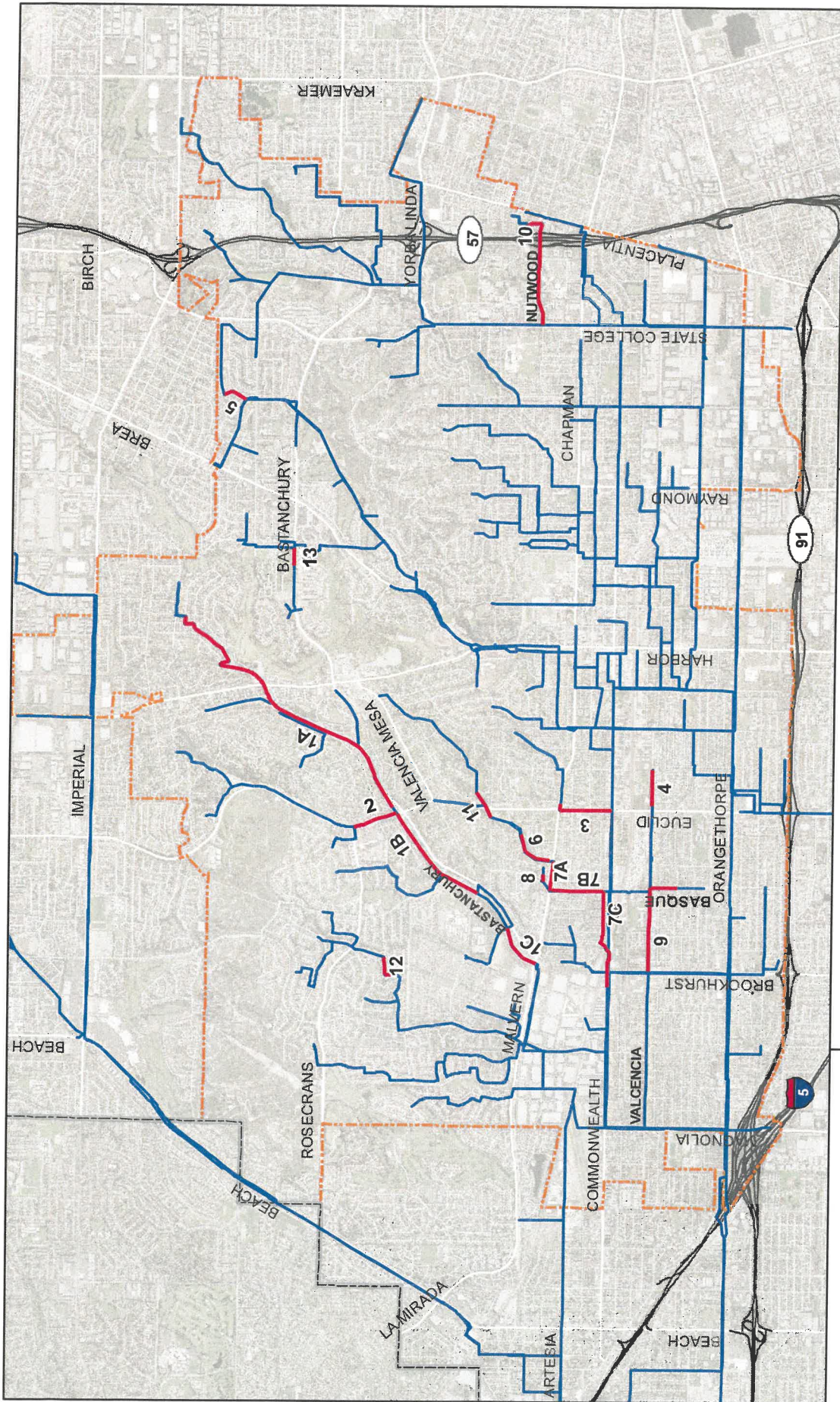
Figure 1-2
Existing Sewer System





**City of Fullerton
Sewer Master Plan
Figure 1-5
Dates of Sewer
Construction**





L:\Projects GIS\24-001.00 Fullerton Sewer Master Plan\Project MXD\Figures 5-1 CIP Projects Overview Fullerton SMP



- 1 CIP Project
- Modeled Sewer
- County Boundary
- City Boundary
- Freeway
- Street



**City of Fullerton
Sewer Master Plan
Figure 5-1
CIP Projects Overview**